



RURAL DEVELOPMENT NETWORK
OF NORTH MACEDONIA



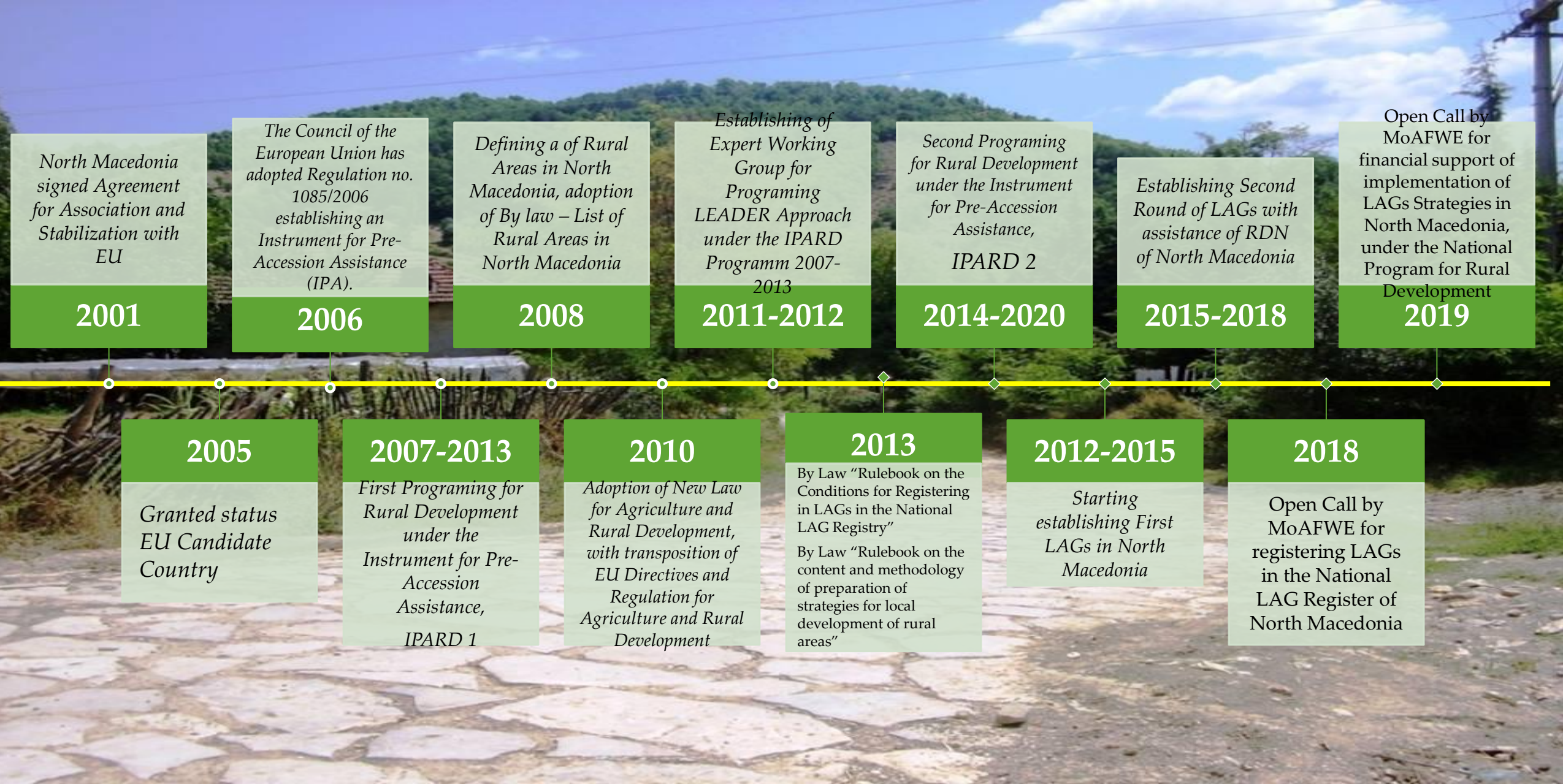
LOCAL ACTION GROUP
PLACHKOVICA



LEADER



NETWORK
in NORTH MACEDONIA



ROAD toward LEADER Approach in NORTH MACEDONIA

NATIONAL LEGISLATION RELATED TO LEADER APPROACH IN NORTH MACEDONIA

Law on Agriculture and Rural Development (2010, 2011/2012/2013)

- ❑ Bylaw “List of rural areas in North Macedonia” (2008)
- ❑ Bylaw “Rulebook on the content and methodology of preparation of strategies for local development of rural areas” (2013)
- ❑ Bylaw “Rulebook on the Conditions for Registering in LAGs in the National LAG Registry” (2013)

NATIONAL LEGISLATION RELATED TO LEADER APPROACH IN NORTH MACEDONIA

Article 89

(harmonized with Article 62 of EU Regulation No 1968/2005). The Council of Europe)

Local Action Group (LAG) is established as a company, cooperative or civic association or foundation established on a territorial unit in one or more rural areas with **no less than 5,000** inhabitants and **not more than 100,000** inhabitants.

NATIONAL LEGISLATION RELATED TO LEADER APPROACH IN NORTH MACEDONIA

Article 89

The Local Action Group (LAG) for Rural Development is established through:

- Merging **two (2) or more** municipalities defined as rural areas and cadastral boundaries between them;
- Establishing **Public-private partnerships** between municipalities, natural and legal persons or citizens' associations based in the municipalities.
- One community or entity **may not be a member of more than one** Local Action Group (LAG), except in the case of entities having, pursuant to the law establishing them, subsidiaries/branch offices registered in the territory for which the Local Action Group (LAG) is established.
- Citizens' associations for environmental protection, agricultural producers, youth and women in rural areas must be represented by at **least 50%** in the Local Action Group (LAG) for rural development.
- To be entered** in the register of local action groups (LAG) maintained by the Ministry of Agriculture, Forestry and Water Economy.



NATIONAL LEGISLATION RELATED TO LEADER APPROACH IN NORTH MACEDONIA

To be registered in the National Register of LAGs under the MoAFWE:

- ☐ To have Appropriate legal form (association, foundation, company and co-operative)
- ☐ To have Appropriate relationship among members (at least 50%, civil sector, at most 30% business sector, and at most 20% public sector);
- ☐ To have an adequate coverage of the territory
- ☐ To have prepared a Strategy of Local Action Groups (LAG) for Local Rural Development, in accordance with the Rulebook on the content and methodology for preparation of strategies for local development of rural areas;
- ☐ Have open and transparent decision-making procedures (established governing bodies: Assembly, Board of Directors, Supervisory Board, authorized representative, etc.)
- ☐ Have clear rules and procedures for the election of its members and their rights and obligations;

NATIONAL LEGISLATION RELATED TO LEADER APPROACH IN NORTH MACEDONIA

To be registered in the National Register of LAGs under the MoAFWE:

- ☐ Have clear rules for respecting the views of all stakeholders in project preparation and decision making;
- ☐ To have an effective system of exchange of information and decisions for all stakeholders on the next steps to be taken;
- ☐ Have regular reporting on the operation and functioning of LAGs;
- ☐ Have a regular review of reports on the use of funds, financial forecasts and contract reviews;
- ☐ Encourage staff and members of local action groups (LAGs) to educate and trained in required areas;
- ☐ Identify risks in areas that could jeopardize the operation of local action groups (LAGs), such as employment finance, etc.;

1. LAG "ABER 2015"
2. LAG "AGROLIDER"
3. LAG "BELASIJA-OGRAADDEN"
4. LAG "BOIMIA"
5. LAG "BREGALNICA"
6. LAG "VARDAR LEADER"
7. LAG "MALESH-PIJANEC"
8. LAG "OSOGOVSKI LISEC"
9. LAG "PELAGONIJA"
- 10. LAG "PLACKOVICA"**
11. LAG "POLOG-CENTAR"
12. LAG "SKARDUS"
13. LAG "TIKVESKA VINSKA DOLINA"



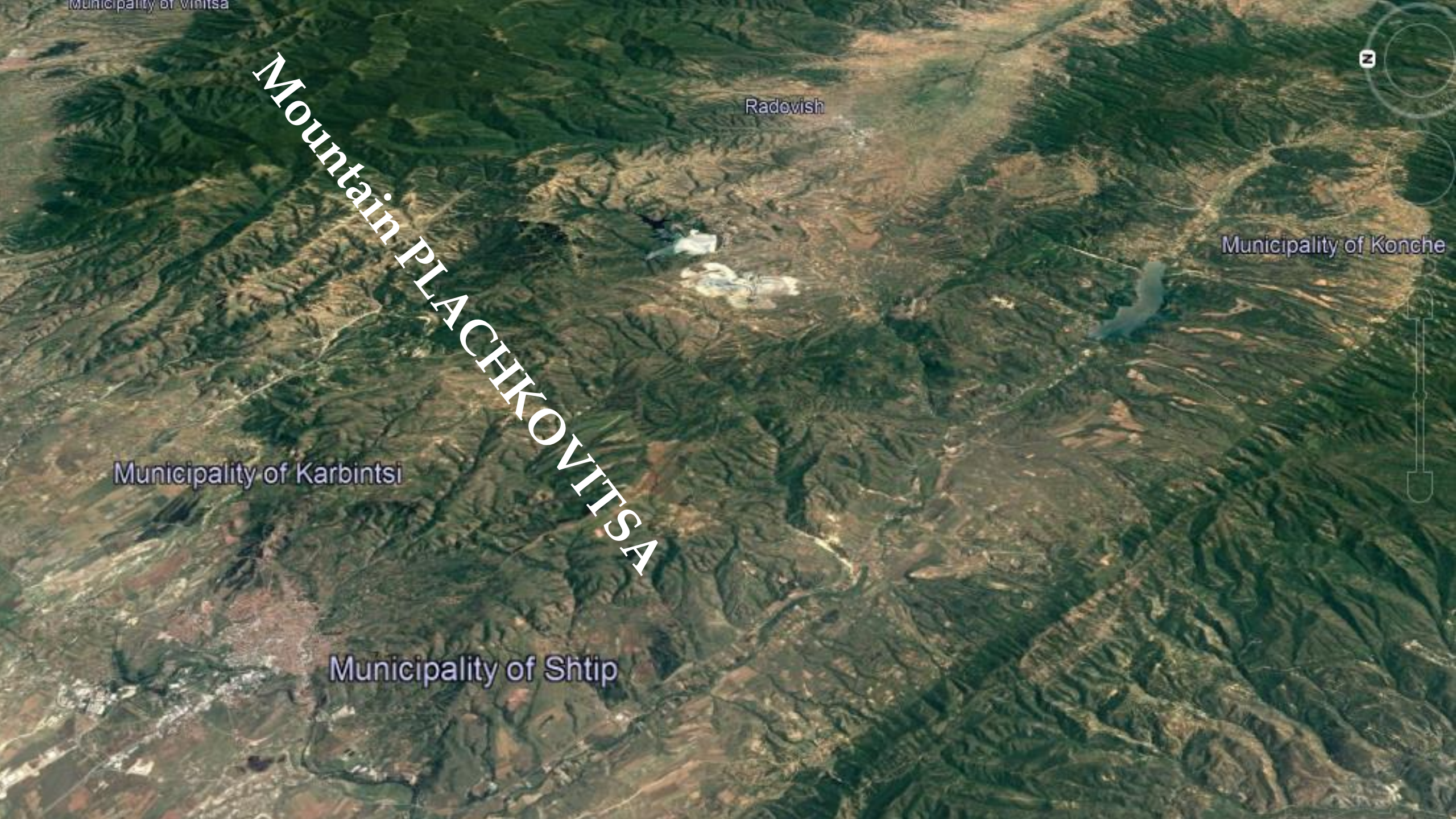


ПЛАЧКОВИЦА

ЛОКАЛНА АКЦИСКА ГРУПА

TERITORY





Municipality of Vinitsa

Radovich

Municipality of Konche

Municipality of Karbintsi

Municipality of Shtip

Mountain PLACHKOVITSA

POPULATION

	Area (km ²)	Rural communities	No. of habitants Census 2002	Population density Census 2002 (p/km ²)	No. of habitants Estimation 31.12.2018	Population density Estimation (p/km ²)
Municipality of Karbintsi	231	29	4.012	17,37	3.918	17,36
Municipality of Konche	233	14	3.536	15,17	3.570	15,42
Municipality of Radovich	608	36	28.244	46,45	29.132	47,76
Municipality of Shtip	583	44	47.796	81,98	48.766	83,46
<i>Town of Shtip</i>	<i>13,5</i>	<i>0</i>	<i>43.652</i>	<i>3233,50</i>	<i>44.439</i>	<i>3291,77</i>
Shtip rural area	569,5	44	4.144	7,28	4.218	7,41
LAG territory:	1641,5	122	39.936	24,33	40.838	24,89

NATURE AND ENVIRONMENT

Mountain PLACHKOVITSA



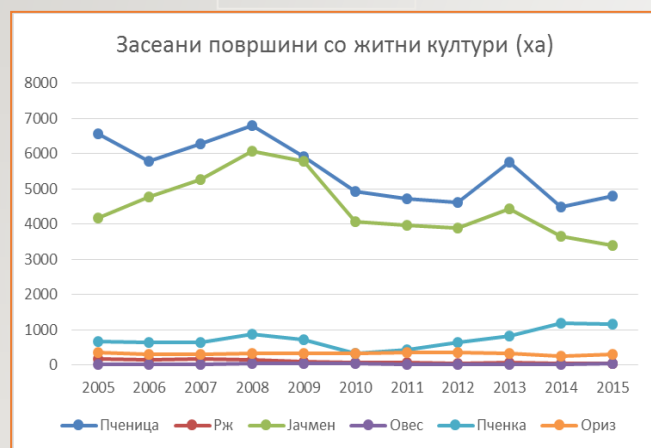
Distribution of agricultural land by categories of use of the territory of the LAG

	Total agricultural area (ha)	Total arable area (ha)	Planks and gardens (ha)	Orchards (ha)	Vineyards (ha)	Meadows (ha)	Pastures (ha)
Karbintsi	7.302	6.764	6.162	180	324	98	528
Konche	9.265	4.348	3.981	122	99	146	4.916
Radovish	43.342	10.439	9.113	435	620	271	32.898
Shtip	32.208	8.541	7.875	163	395	108	23.661
Total LAG:	92.117	30.092	27.131	900	1.438	623	62.003

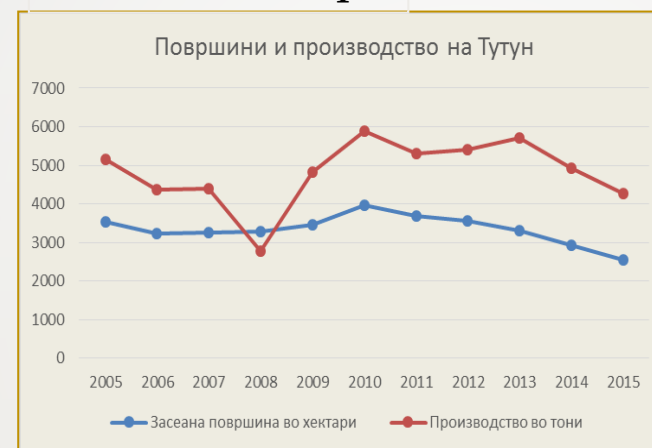


AGRICULTURAL TRENDS

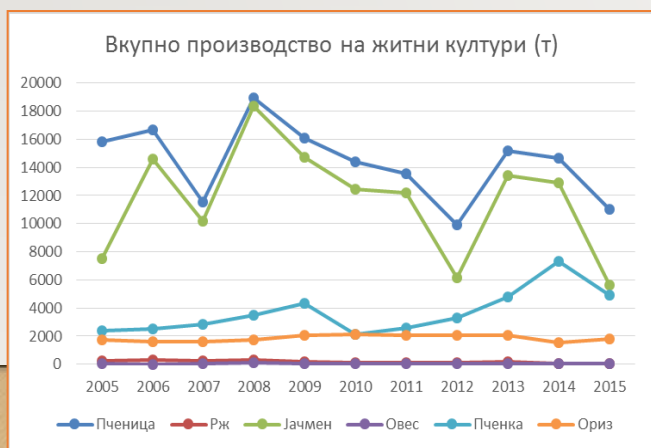
Cereals



Industrial crops



Feed crops



AGRICULTURAL TRENDS



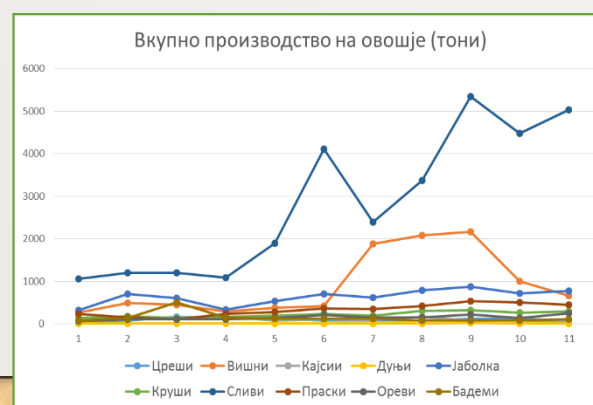
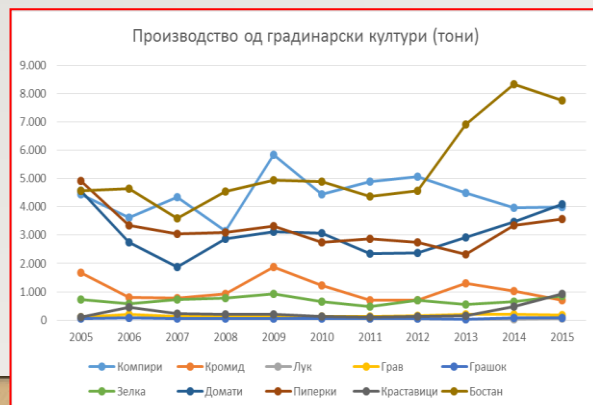
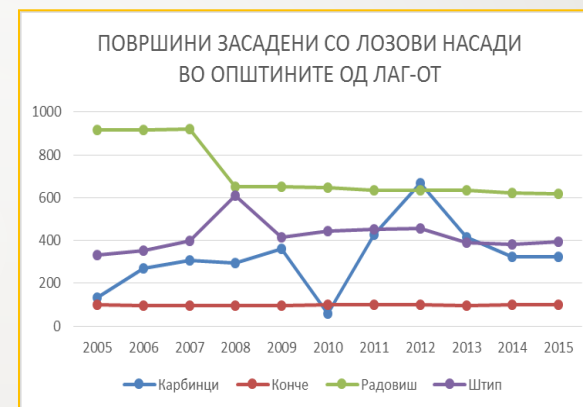
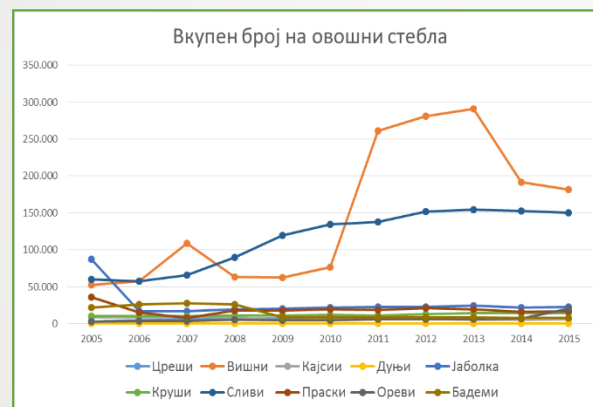
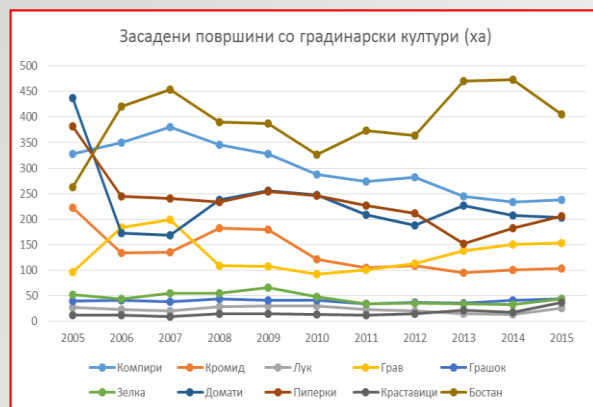
Vegetable crops



Fruit production



Vineyard



LIVESTOCK AND FISHERIES

2007	Horses	Cattles	Sheeps	Goates	Pigs	Poultry	Rabits	Bee families
Karbintsi	144	3.971	3.506	2.688	2.193	13.003	695	315
Konche	297	2.530	5.603	1.454	651	5.194	160	1.092
Radovish	1.934	4.148	21.101	3.887	2.294	18.137	698	1.485
Shtip	124	2.438	31.283	2.441	3.886	17.601	898	3.672
LAG Plackovica:	2.499	13.087	61.493	10.470	9.024	53.935	2.451	6.564

Fishponds (farms)	number of households that own a fish farm	Total area (ha)				Total capacity (m³)			
		ToTotal area ha	For trout	For carp for another fish		Total capacity	For trout	For carp for another fish	
Karbintsi	0	0	0	0	0	0	0	0	0
Konche	4	0,28	0	0,23	0,05	6.366	0	5.616	750
Radovish	5	1	0	0,9	0,1	17.000	0	14.000	3.000
Shtip	7	1,46	0,4	0,71	0,35	30.762	8800	14.088	7.874
LAG Plackovica:	16	2,74	0,4	1,84	0,5	54.128	8800	33.704	11.624

RURAL TOURISM



Mountain Plachkovitsa



Lake Mantovo



Isaro



Monastery
St. George - Oraovitsa



Village tourism



Bargala



Ploce and Pilav Tepe
(Alpinism)



Monastery St. Stephan - Konche

Main Events



How it starts?

2013 - The Initiative began by Association CELOR;

2015 - Official Process Start in at the end of 2015 with Technical and Financial Support of Rural Development Network, (Establishing Initiative Body)

2016 - Development of Strategy Start in 2016 with support of National Rural Development Network,

2017 - Finalizing Strategy was in 2017

2018 - Establishing Assembly held on 14 February 2018 with 19 members (all Legal Entities)

2018 - Official Registering in Central Registering Office of NM on 20.02.2018 as Legal Entity:
Association for rural development – Local Action Group “Plackovica”

2018 - Entering in Official Register of LAGs in N.Macedonia on 30.05.2018 in Ministry of
Agriculture, Forestry and Water Economy (MoAFWE)

MEMBERS (FOUNDERS) of LAG PLACKOVICA GENERAL ASSEMBLY

Public Entities (4)



Municipality of
KONCHE



Municipality of
KARBINTSI



Municipality of
RADOVISH

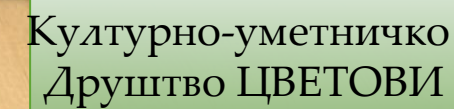
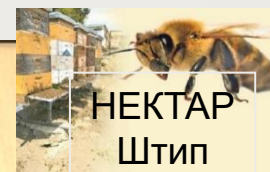
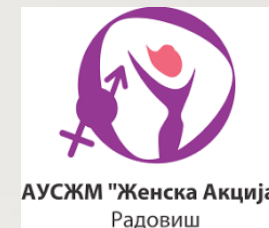
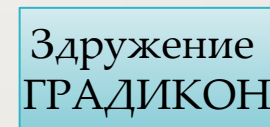


Municipality of
SHTIP

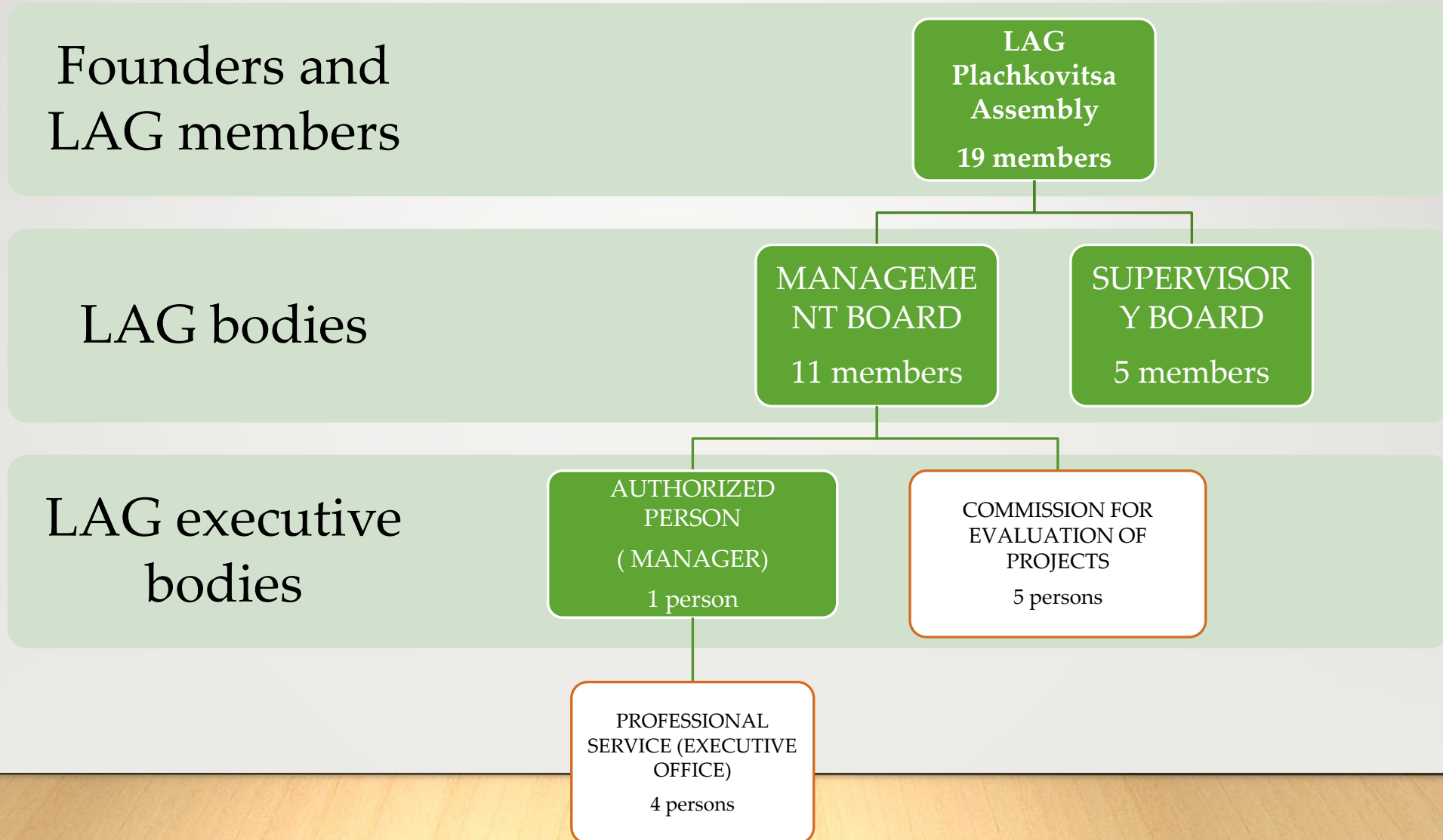
Private Companies Ltd. (4)



NGOs (11)

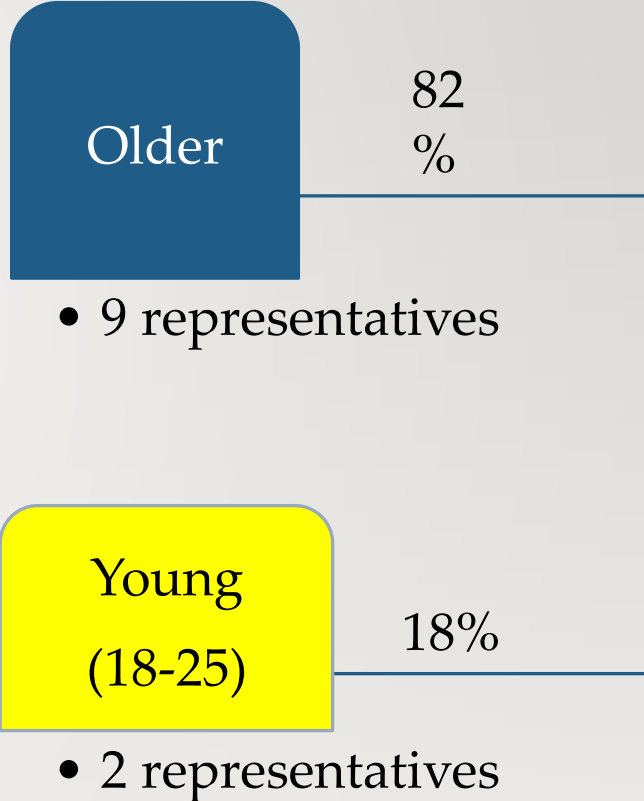
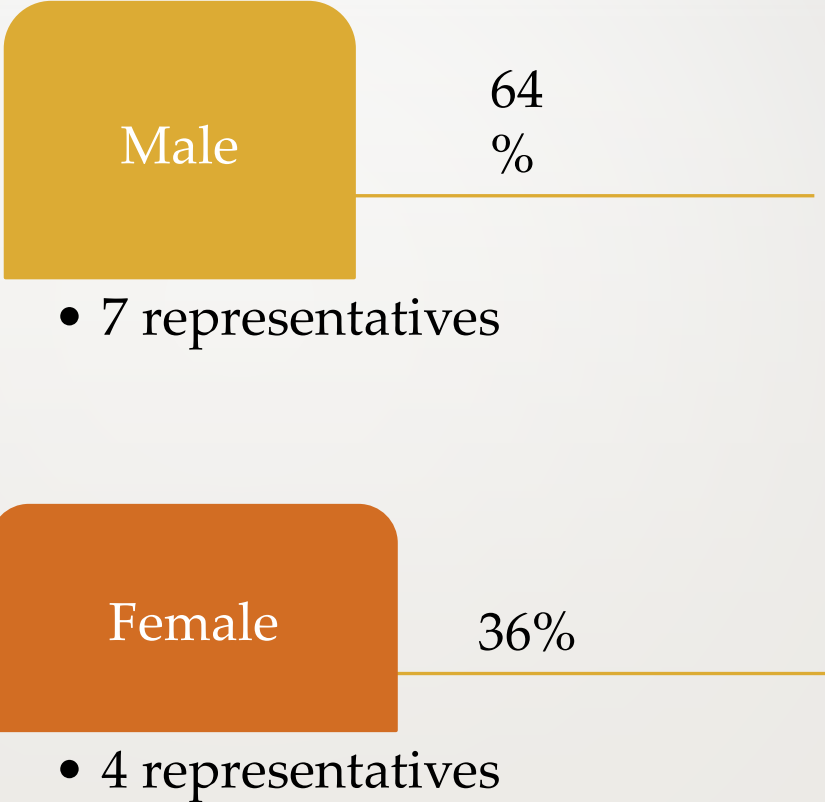
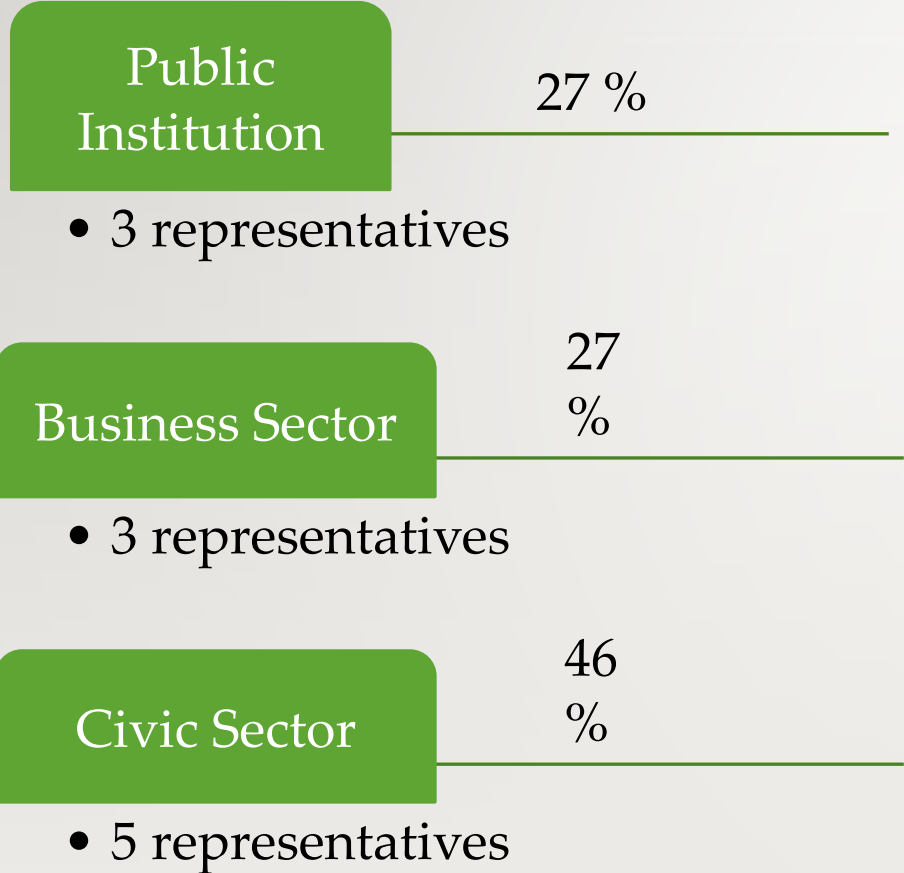


LAG PLACKOVICA ORGANIZATIONAL STRUCTURE



LAG PLACKOVICA

STRUCTURE OF MANAGEMENT BOARD



LAG Plackovica – STRATEGY:

Vision

LAG Plackovica is a functional unit in which the village is an ideal place to live, promoting social, cultural, natural and economic values, Sustainable management of local resources, through the joint action of the public, civic and business sectors for economic prosperity and better quality of life on citizens in for rural areas.

Goal 1: Building the institutional capacity of the LAG;

Goal 2: Economic development of rural areas through the sustainable use of available resources

Goal 3: Improving the living conditions of the population in the rural areas by improving the roads, public and social infrastructure

Goal 4: Social security according to the needs of the population

Activities conducted so far:

Project: LAG-NET in East & South East Region, implemented by CELOR, KRUNA PLUS and AGRO-EKO

Capacity building sessions: Trainings for LEADER Approach, Project Proposal Writing, Strategy Planning, Evaluation & Monitoring of Project

- Study Tour in Croatia in September 2018
- Visit LEADERFest in Zatec (The Czech Republic), May 2019

Project: Promotion of Natural and Cultural Values in Rural Areas (on-going) implemented by LAG Plackovica, and LAG Boimia (2019)

Project for Energy Efficiency on Public Buildings in LAG Plackovica via Instalment of 4 Photovoltaic Systems (2019-2020)

10 kW system on High School in Radovis

5 kW system on Municipal Building in Konche

5 kW system on Primary School in village Tri Cheshmi – Stip

5 kW system on KinderGarthen in Tarinci, Karbinci.



Meeting with Stakeholders



Trainings and Workshops





Study Tour in Croatia (September 2018)

Croatia:

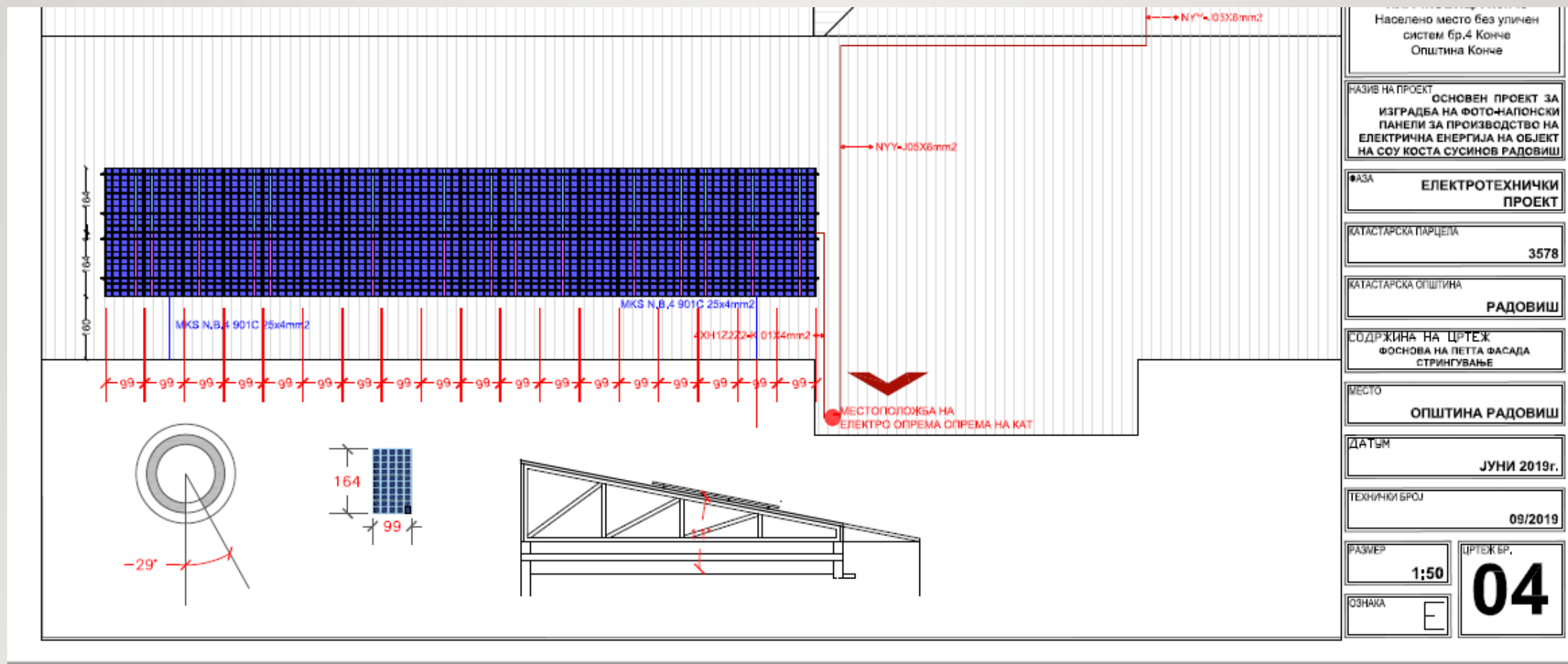
- LAG Karashica
- LAG Gornja Rijeka



Study Tour in Czech Republic (May 2019)



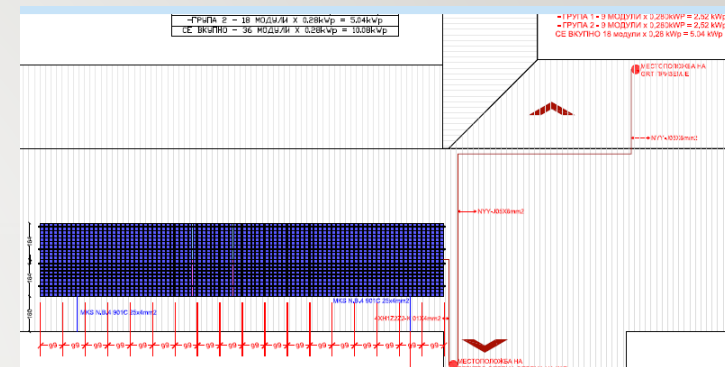
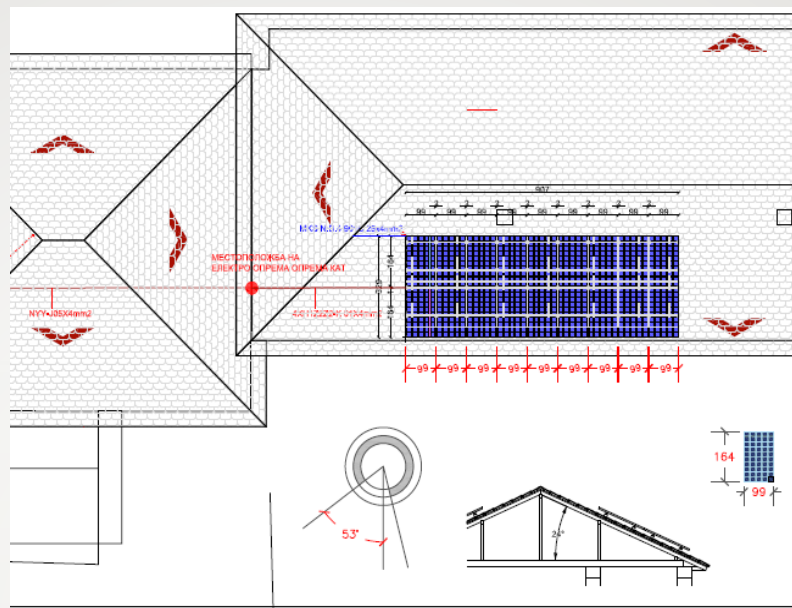
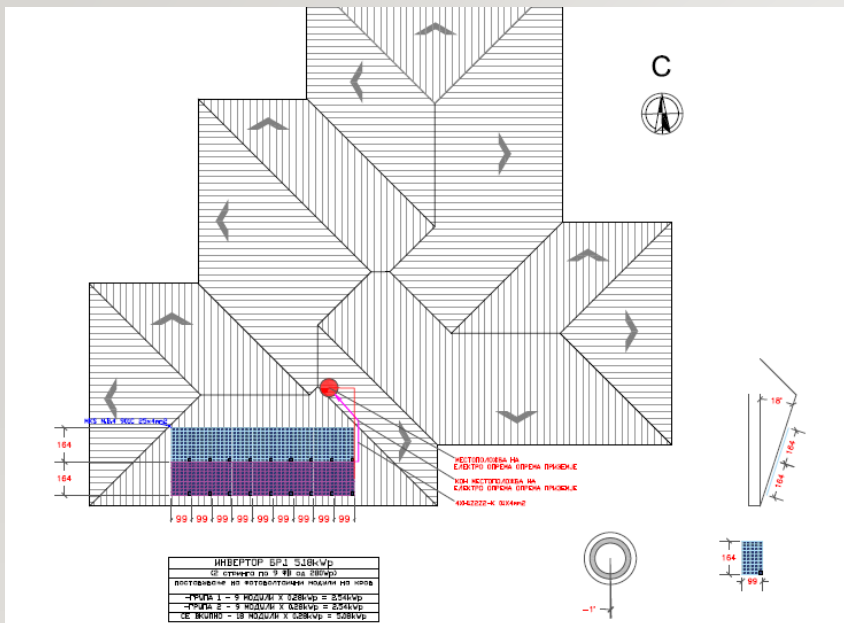
**Hosting Study Visit of LAGs from Georgia (Abhasia)
(October 2019)**



Photovoltaic System for Electricity
On High School “Kosta Susinov” Radovis
10 kW Instalment

Project for Energy Efficiency on Public Buldings in LAG
Plackovica via Instalment of 4 Photovoltaic Systems (2019-2020)





Total Instalment : 25 kW

Total Budget: 1.400.000 MKD (or 22.764 EUR)

By National Program: 800.000 MKD (13.008 EUR) 57%

Contribution by partners: 600.000 MKD (9.756 EUR) 33%

Project for Energy Efficiency on Public Buldings in LAG Plackovica via Instalment of 4 Photovoltaic Systems (2019-2020)

General Recommendations



Recommendations for institutional set up improvements

- Government institutions at all levels should continue to work on development of
 - strategic and programming documents , incl. IPARD to be developed consolidated in all countries)
 - regulatory framework for introduction of LEADER (consolidate with latest EU regulations for LEADER (and CLLD) – (EU) 1305/2013, (EU) 1303/2013
- Strengthening human capacities of relevant institutions
 - Engage enlarged number of staff from relevant ministries and Paying Agency
 - The staff of ministries and other stakeholders (municipalities, CSOs, business sector) need more tailor made trainings
 - The staff of the Managing Authority and the Paying Agency will have to be trained to implement LEADER measure
 - Specialized information campaigns and seminars for representatives of local self-governments should be prepared.

Recommendations for policy improvements

- Local development policies should be implemented with a bottom-up decision-making process allowing for better connection and coordination of diverse rural actors
- Development of guidelines on establishment, role, functioning and accreditation of LAGs including start-up toolkits for development of Local Development Strategy (LDS) for potential LAG constituents
- Synchronization and complementarity of National rural development funding with EU IPARD funding

Recommendations for empowering local stakeholders

- Awareness raising campaigns needed - diverse models of networking of various local stakeholders (public, civil and business)
- Exchange of information and transfer of best international practices from EU LAGs.
- Capacity building and training of local stakeholders about bottom up, community based actions.



Thank you for your Attention!

Stole Georgiev

stole.georgiev@gmail.com

lag.plackovica@gmail.com

www.plackovica.lag.mk

